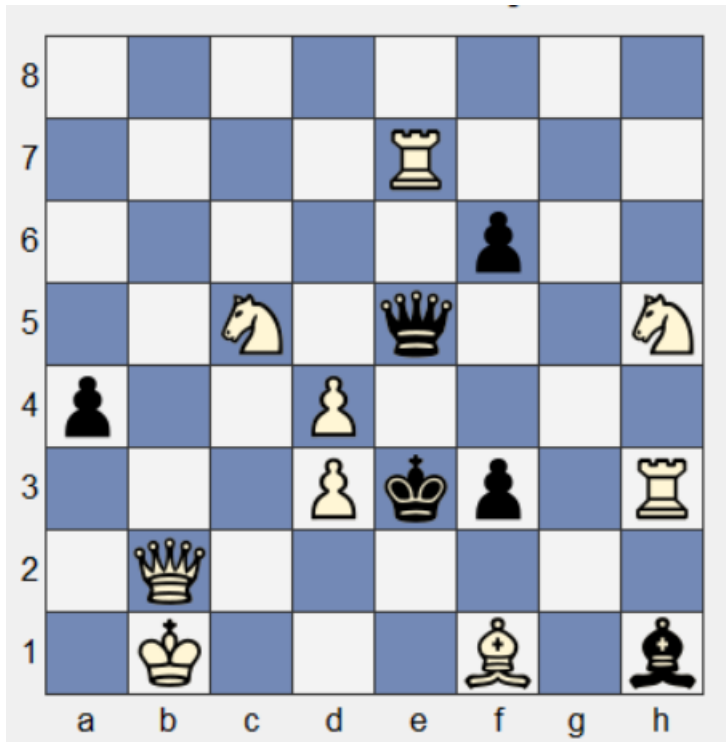


90.Pfälzischer Schachkongress – Problemschach – 01.04.2023 in Eisenberg

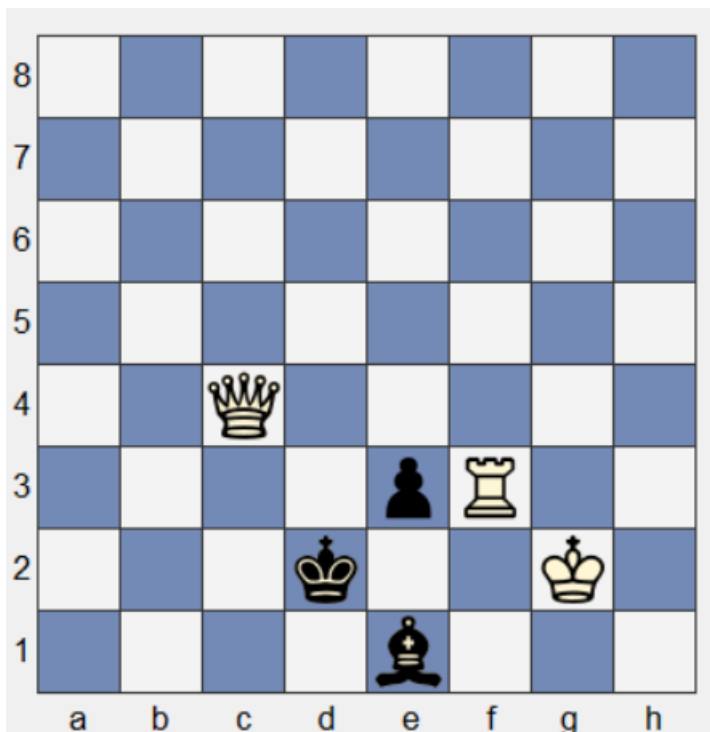


NAME:

Verein:

FEN „8/4R3/5p2/2N1q2N/p2P4/3Pkp1R/1Q6/1K3B1b w - - 0 1“

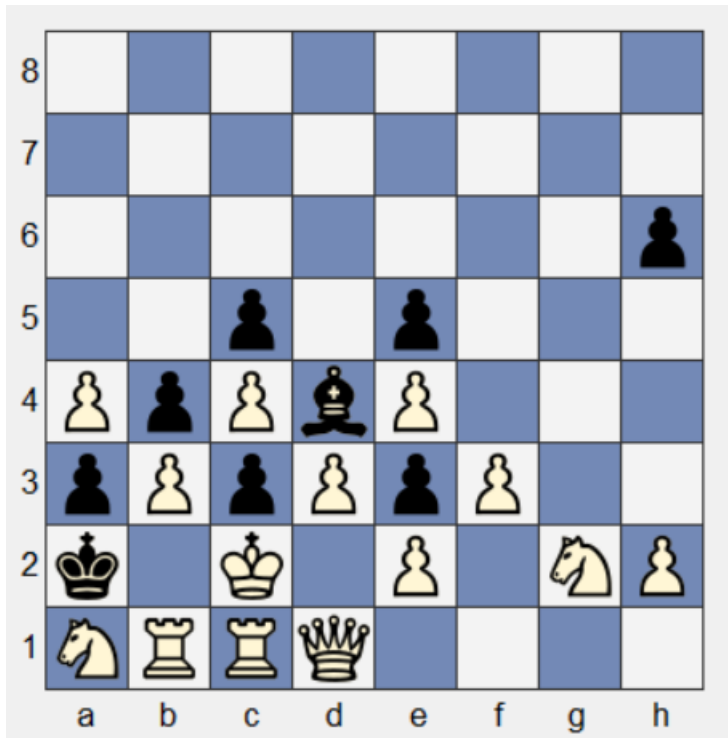
Matt in 2 Zügen



FEN „8/8/8/8/2Q5/4pR2/3k2K1/4b3 w - - 0 1“

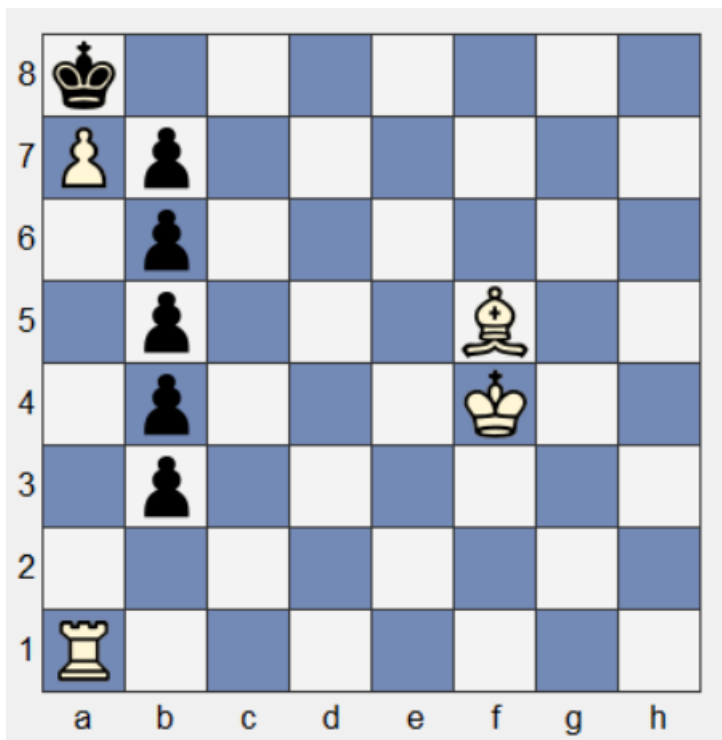
Matt in 3 Zügen

90.Pfälzischer Schachkongress – Problemschach – 01.04.2023 in Eisenberg



FEN „8/8/7p/2p1p3/PpPbP3/pPpPpP2/k1K1P1NP/NRRQ4 w - - 0 1“

Matt in 6 Zügen



FEN „k7/Pp6/1p6/1p3B2/1p3K2/1p6/8/R7 w - - 0 1“

Matt in 6 Zügen
